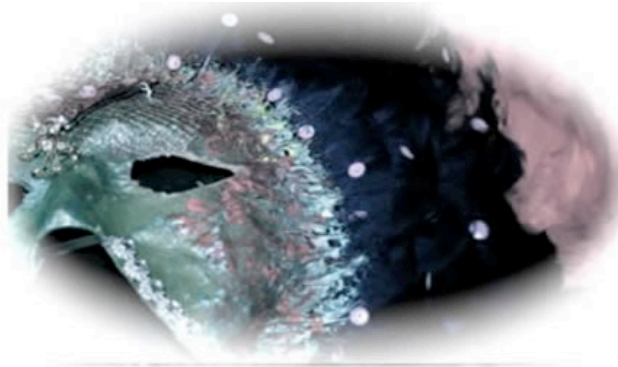


DISCOVERING THE UNLIVED LIFE THROUGH DREAMS AND MASK WORK

A Marion Woodman Foundation Affiliated Programme



Halkidiki, Northern Greece

led by

**Sue Congram
Marian Dunlea**

July 5th - 10th 2011

Fee € 750 euros (inclusive of accommodation and meals)

This is a popular yearly event and places are limited.

Early booking is advised.

This event is run as a personal reflection residential workshop with dream work and active imagination, using bodywork, voice, mask, and art. Held at the delightful [Rahona Beach hotel](#) overlooking the sea in Northern Greece, we use the inner and outer space of nature's environment to share dreams, to connect with the unlived life, and develop personal masks as a symbol of new life.

We will honour the discipline of morning silence, a time for self reflection and journaling dreams. Then working with our dreams, we will see where the energy of the dream is moving in the body and how that opens the possibility to work with our symbols and images in an embodied form. The energy that emerges is represented in the mask making process, which then begins to become embodied in the wearing of the mask. We will draw on the teachings of Marion Woodman and her BodySoul work in conjunction with Jungian and Gestalt theory.

There is time to relax in the afternoons before starting the evening sessions.

Who is the workshop for?

Men and women who are engaged in their own personal work and want to inquire deeper.

Couples who would like an opportunity to do deep individual work side by side.

People who have worked with masks and want to explore more fully the relationship between mask work and dreams.

People who are professionally engaged in working with the development of others and interested in learning about the process of 'active imagination' using dreams, art, body, voice and mask work.

The venue

[Rahona Beach](#) is a delightful villa set in its own grounds on the coast of Northern Greece. With private access to the sea and small beach, this venue offers a wonderful space for personal reflection and relaxation. With full booking, we will take over the whole villa and gardens. All rooms are en-suite, air conditioned with balconies and sea views. The owner is a qualified chef, providing an excellent cuisine. The very reasonable cost of this event includes full board with two people sharing per room. Single rooms may be available at extra cost, please contact either Sue or Marian for further information.

Flights are to Thessaloniki in Northern Greece.

The programme

The programme will start at 6 pm on the 5th July 2011, ending early afternoon of the 10th July 2011.

Fee

The fee for the event includes accommodation and all meals. A deposit of **€200 euros** will reserve your place. The full fee of **€750 euros** is due by **May 30th 2011**, thereafter the fee increases to **€800 euros**. Extra hotel accommodation either side of the workshop can be provided at special rates negotiated for you.

Booking

You can book by paying the full fee, or reserve a place with a non-refundable deposit of **€200 euros**. Payment can be made by credit or debit card, electronic bank transfer or cheque. The [Booking Form](#) is available at the website www.suecongram.co.uk, or through the contacts below. If you are booking from the UK and making your payment in GBP please contact Sue by email or phone.

Contacts

Sue on +44 (0)1981 580040, or +44 (0) 7837 036 051 or email sue@leaderfulwomen.org

Marian +35 (0) 3916 38228 or email mariandunlea@googlemail.com

Residents of Greece contact **Lia Zografou** +30 (0) 231 0273659 or email liazografou@hotmail.com



Programme Leaders

Sue Congram is a Chartered Psychologist, her work is in organisational consultancy and personal-professional development. Sue is currently leading a Leaderful Women project advancing the way that we think and act on gender issues at work. Sue teaches Gestalt as organisational practice in the UK and Greece and Scandinavia. She is currently researching a PhD on corporate leadership. Other research that she is co-leading is studying indigenous leadership wisdoms in developing countries. Sue has published four books and co-edited a publication on Education and Imagination. www.suecongram.co.uk, www.leaderfulwomen.org

Marian Dunlea MSc, is a Jungian Analyst working in private practice in Dublin, Ireland. Her training and experience encompasses Psychoanalysis, Psychosynthesis, Authentic Movement, Trauma training, voice work, and theatre. She has taught in psychotherapy training institutes and in university programs, and she facilitates workshops nationally and internationally. She teaches regularly for the Marion Woodman Foundation, where her particular focus lies in working with dreams in an embodied form. www.mariandunlea.com

Sue and Marian have both completed the Leadership Programme with Marion Woodman, run by the [Marion Woodman Foundation](#). www.mwoodmanfoundation.org